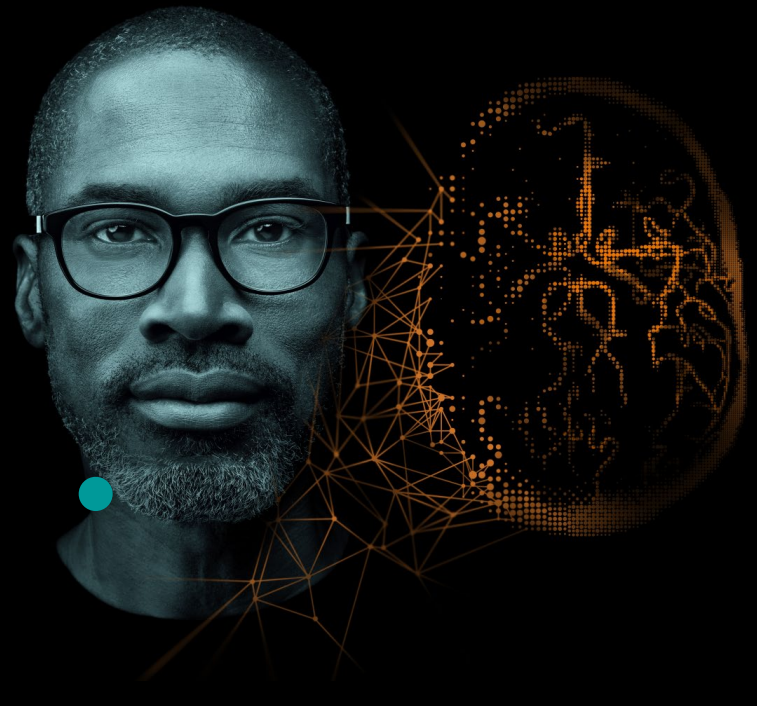


*syngo.via* VB40B\_HF04

# Customer Information



## To whom it may concern,

We would like to inform you about the latest software change for *syngo.via* which is now available. The purpose of this letter is to raise your awareness of the importance of this update and inform you on the content of this package.

The installation of this update is recommended in order to ensure proper functioning of your system.

### Software service pack version

Change Reference:      SY029/21/P  
                                 SY051/21/S

### Affected systems

All systems running on basic software version *syngo.via* VB40 are affected by this update.

### Reasons for Update

Bug fixes, performance, stability, serviceability, and security improvements, OTS updates.

# Content of the Update

*syngo.via* VB40B\_HF04 intends to solve the following issues:

## ***syngo.via* general**

- Sporadically comparing current and prior within the ChangeVis tool the study date of the prior study was not updated correctly.
- Users could not use cinematic VRT after opening a study in MM Reading step of CT Vascular.
- Result images were rotated inplane by 30 to 40 degrees, using 'General Alignment ParaXXX MPR' for rapid results.
- Users were not able to see full heart anatomy, generated by rapid results with ThreeChambers preset.
- Sporadically the anatomy detection failed when creating parallel ranges with user visible message 'Automatic anatomy localization has failed'.
- Customers using Desktop Connector were not able to use 3<sup>rd</sup> party integration (e.g. Image Callup) after upgrading *syngo.via* to VB40B.
- Sporadically users were not able to log into *syngo.via*, using *syngo.via* single sign on. Login, using username and password was still possible.
- Studies with modality type CR could not be added to workflows if the CR study is more recent than the prior studies which were already loaded.
- Sporadically OpenApps was not useable due to not released licenses from former usages.
- Add study function: priors could not be loaded into workflow when retrieving them for the first time. The user had to unload and reload the study.
- Customers who upgraded from VB20 to VB40B were facing performance issues caused by paging (memory).
- Incorrect alignment / box definition when applying Head Orbitomeatal preset with specific datasets.
- For transversal images with two lines of comment, the frame comment was not kept when creating a snapshot.

## ***syngo.via* frontier**

- The *syngo.via* Frontier prototypes are moving to the Digital Marketplace. The Frontier Prototype Store is currently still available to you, but will be discontinued with *syngo.via* VB60. If you are a *syngo.via* Frontier users, please access the Digital Marketplace through the shopping-cart icon in the top right corner of your *syngo.via* and create a free account. After you have created the account and affiliated it with your institution, you can start downloading and installing your favorite *syngo.via* Frontier prototypes. For more information on our new and innovative features please visit the [syngo.via Frontier website](#) or check out the [Frontier User Forum](#) and the Developer Community.

## **syngo.CT**

- CT Cardiac Planning: An exception occurred when dragging a different series from the series panel during preprocessing.
- CT Vascular Analysis: The Remove Calcium tool did not work for a Dual Energy data set when switching the layout to Radial ranges.
- CT Vascular Analysis: An exception occurred when loading a data set in VB40 with segmentation that was created in VB30.
- CT Vascular Analysis: The bone mask was not cleared and previously marked structures were not removed when modifying the HU threshold of the structure isolation tool.
- CT Cardiac Function: The calculation did not work as expected and contours were not created when performing a Right Ventricle (RV) calculation.
- CT Dual Energy: The calculated iodine concentration (IMD) or iodine attenuation (IOD) was too high when using Dual Energy Data with iBHC (Bone setting) in acquisition work place (AWP) or syngo.via. Thus, the actual iodine concentration was overestimated. In the same case, the virtual non-contrast image (VNC) could underestimate the true non-contrast values.
- CT Dual Energy: The status of the first series appeared as failed, even though the result was calculated when two series with different RRT roles were sent to syngo.via one by one (series chunking).
- CT Dual Energy: Specific Spectral Postprocessing (SPP) data sets which were created with new Siemens Healthineers scanner or at syngo.via, for example, VB50 and VB60, could not be loaded.
- CT Bone Reading: The slice spacing for the generated results was less than expected when configuring the interval parameter for Axial Spine Ranges in mm and then create the ranges.
- CT Pulmo3D: The lobe segmentation results were displayed incorrectly when loading a 16-bit DICOM data set.

## **syngo.MM RT Image Suite**

- When dragging two image series from the Series panel to the Contouring step, the 3D Nudge tool only worked intermittently on the non-contouring image series and the contour editing with the 3D Nudge tool was not correctly processed.
- When adding CT from PET/CT to a planning CT then fused the PET series and performed deformable registration for the fused image, the colored PET overlay was not displayed.
- Sporadically RT Structures were not saved after "save and send". After completing the study, using 'save and send' and re-opening the study, previously created and/or changed structures were not available or not changed anymore.

## **syngo.MR**

- MR Cardiac analysis: Sporadically results from other patients could show up in Prior / Structured Report / Findings.
- MR Cardiac Analysis: Drag-and-drop in Flow quantification step displayed a misleading warning message.
- MR Cardiac Analysis: With Cardiac Cine Series, measurements on different images were overlapping in the snapshot.
- MR Cardiac Perfusion: When using "Save as Series" on the MOCO segment the original series was saved instead of the MOCO. Now the MOCO series is saved.
- MR Prostate: In the report the prostate volume was displayed duplicated and it was not possible to edit the section/report.
- MR Prostate: Sporadically on 'save and send' a timeout exception was displayed when the MR Prostate workflow changed its state to 'complete'.
- MR Tissue4D: An exception was displayed to the user when the Tissue4D licence was not available and basic measurements were done in the workflow. The workflow was stuck in completing state.
- MR Neuro 3D: fMRI VOI measurement details in Report were missing after VB30 upgrade.
- MR Neurology: Perfusion Maps were not sent to PACS when workflow changed the state to ready.
- MR General: Sporadically an error message was displayed to the user when changing the layout in the layout gallery.
- MR General: Retrieving parallel range series from PACS an unexpected gap between slices (spacing value) was displayed in the image.
- MR Oncology: An error messages was displayed when creating a histogram and placing HIS and REF in new locations.
- MR Oncology: In OncoTrend an error message occurred when user tried to change the image type after performing the segmentation.
- MR BreVis: Time Curve was not displayed for several VOIs or ROIs over the whole dynamic. It is now displayed for all measurements.

---

### **Siemens Healthineers Headquarters**

Siemens Healthcare GmbH

Henkestr. 127

91052 Erlangen

Germany

Phone: +49 9131 84-0

siemens-healthineers.com